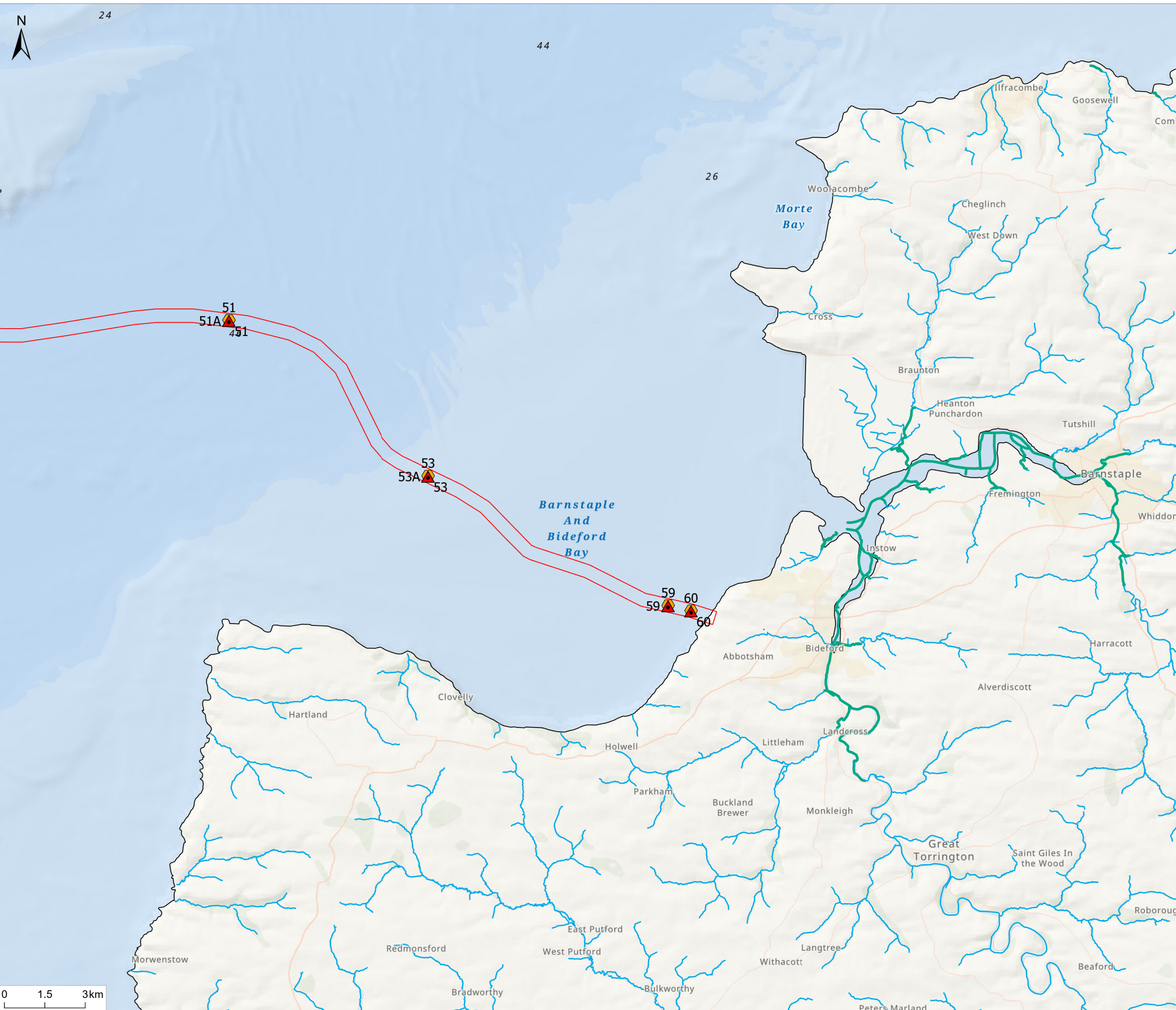


\\?UNC\Corp\UK\Cloud\UK-GIS01\data\70107275 - Xlinks\13 - GSS\132_GIS\ArcGIS\Pro\Projects\UKIES Projects\Cultural Heritage and Marine Archaeology\794-PLN-ESH-00113 - CHMA - Appendix - Near-shore Xlinks borehole locations with Holocene sediment and near



Notes
 1. This plan is scaled at paper size A3. If received electronically it is the recipient's responsibility to print to the correct scale. Only written dimensions should be used.

- Legend**
- UK Offshore Cable Corridor
 - Indicative Cable Centreline
 - UK Exclusive Economic Zone (EEZ)
 - Nearshore sea bed
 - ▲ Core Penetration Test - CPT
 - Vibrocore - VC
- OS Open Rivers**
- Tidal River
 - River
 - Canal

Contains OS data © Crown copyright and database right 2018



P01	FINAL	CE	TM	Nov 2024
Rev	Description	By	CB	Date



Client Xlinks 1 Limited

Project Xlinks' Morocco-UK Power Project

Title Near-shore Xlinks VC/CPT borehole locations with Holocene sediment

APFP Reg: 5(2)(a)

Status	Scale @ A3	Date Created
FINAL	1:135,000	Nov 2024
Figure Number		Rev
7.8		P01

www.xlinks.co

